

IT TERMINALS

Display	IT105B	IT105S	IT105T
Graphic type	LCD 16 blue tones	STN Graphic LCD 65k colors	TFT Graphic LCD 65k colors
Touch Screen	Analog touch screen		
Backlighting	CCFL		
Minimum lamp life at 25°C	20.000	50.000	40.000
Resolution pixel h-v (inches)	320x240 (5,7")	320x240 (5,7")	320x240 (5,7")

Processor			
CPU	Intel PXA270 312MHz		

System memory			
RAM (byte)	64M		
Resident flash array (byte)	32M		

Interfaces			
Serial port SP1	RS232/485		
Serial port SP2 (ITxxxxx1x)	RS232/485		
USB port Host	v. 1.1		
USB port Device	v. 1.1		
CardBus Slot (for Secure Digital/MCC)	1		

Networks			
Integrated (on all models)	Ethernet 10/100 Mbit - RJ45		

Dimensions			
External (W x H x D) (mm)	210,9x158,6x42,8 (61,5 with 2 serials ports)		
Bore holes (W x H) (mm)	192x140	192x140	192x140

Clock			
Supercapacitor Hardware Clock	Supercapacitor 72h		

Technical specifications			
Power supply	18...32 Vcc		
Power consumption (24 Vcc)	~ 10 W		
Protection level	IP 65 frontal		
Working temperature (°C)	0...+50		
Storage/transport temperature (°C)	-20...+65		
Humidity (non-condensing)	85%		
Weight (kg)	~ 3,8		
Certifications	CE		

Order codes and descriptions of IT terminals	
IT105B 0101	5,7" 16 blue tones - Port: SP1 - Ethernet
IT105S 0101	5,7" 65k colors - Port: SP1 - Ethernet
IT105S 0111	5,7" 65k colors - Ports: SP1, SP2 - Ethernet - STN
IT105T 0111	5,7" 65k colors - Ports: SP1, SP2 - Ethernet - TFT



IT105B

5,7" 16 blue tones - Ethernet



IT105S

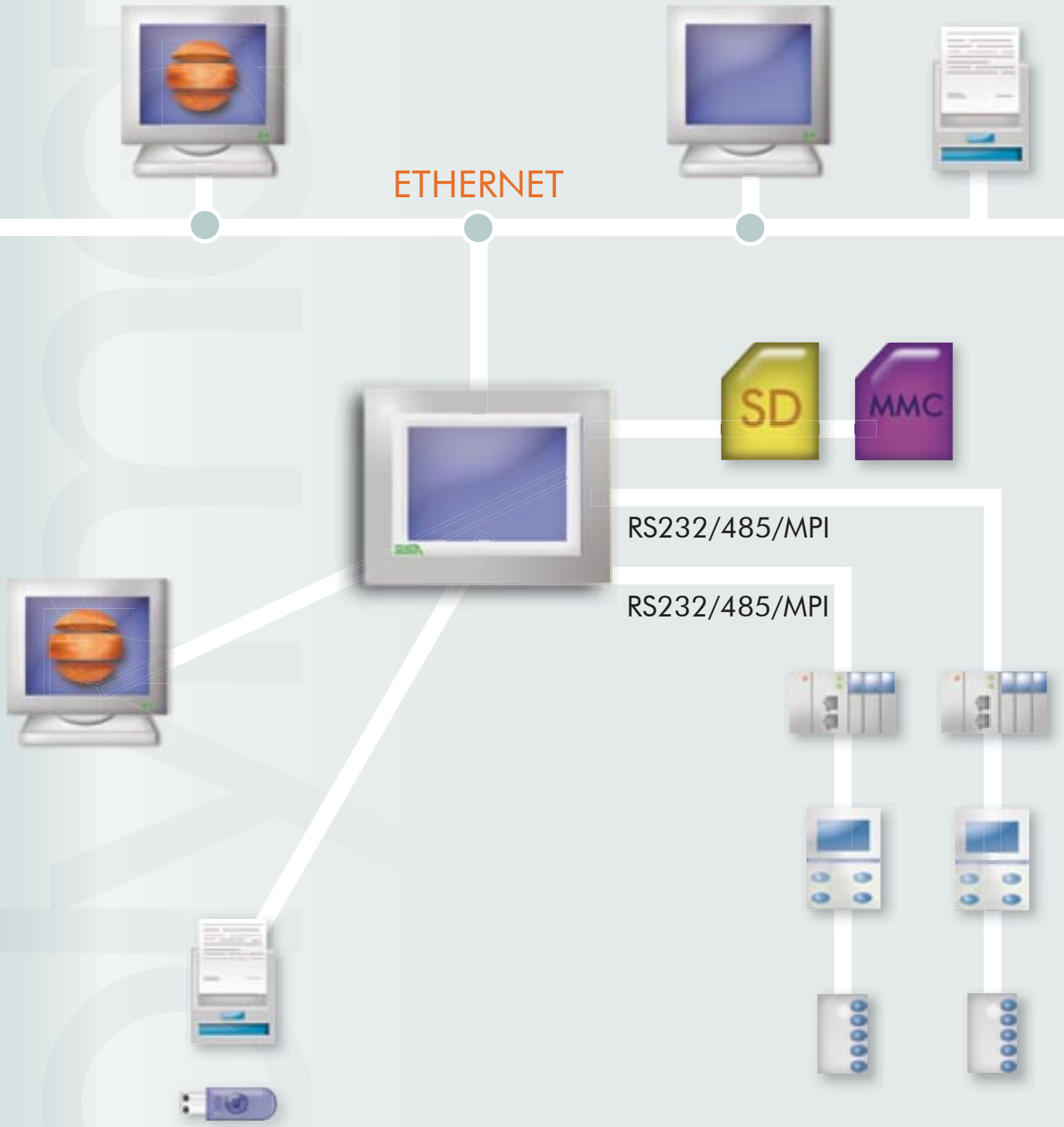
5,7" 65k Colors - Ethernet - STN



IT105T

5,7" 65k Colors - Ethernet - TFT

IT TERMINAL CONNECTIONS



ADVANTAGES OF IT



- ① Power supply
- ② Ethernet 10/100 BASE-T
- ③ Secure digital / MMC
- ④ SP1: PLC serial port, heat regulator, drives, etc.
- ⑤ USB - Host
- ⑥ USB - Device
- ⑦ SP2: PLC serial port, heat regulator, drives, etc.



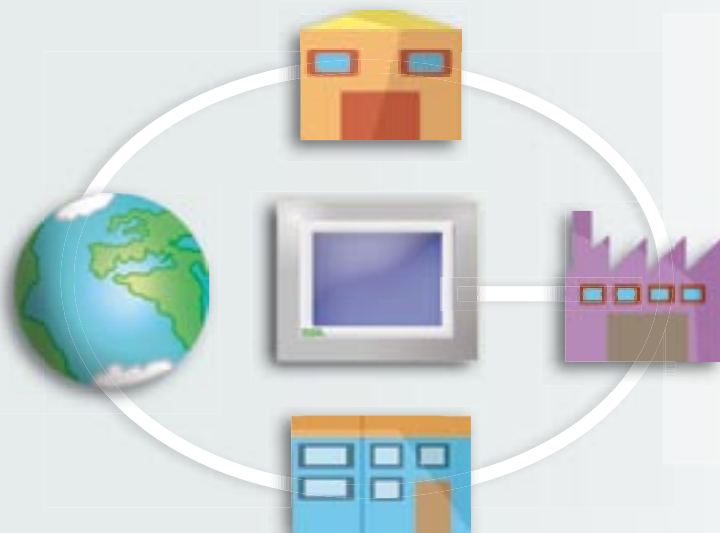
Double USB

IT series terminals are equipped with two USB ports, a device and a host, to which they can be connected:

- Printers, for any reports, data and project screens
- Pen drives for storage or transporting data
- PCs for programming terminals

TFT 65000 color display

Wide Viewing Angle technology permits a very wide viewing angle for the terminal; in addition, the display is able to reduce external light reflection to a minimum such as to guarantee comfortable viewing. High contrast and brightness levels and depth of color combined with various filters give a natural reproduction of colors. All this makes it possible to represent the project and the objects created in Polymath with both realism and precision.



Ethernet TCP/IP

Thanks to the standard TCP/IP network protocol on all IT family terminals, it is possible to interface the panel, then interchange data, with production devices, business/office applications and production management tools (SCADA, ERP, MES etc.).